



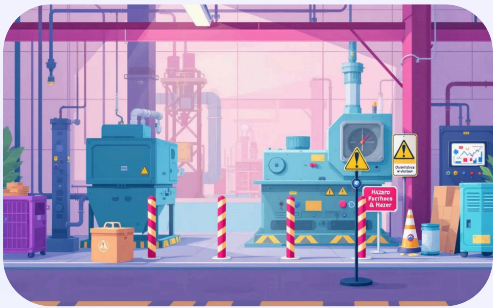
# Regulatory Compliance: A Practical Checklist for Wilmington Businesses

This checklist is designed to help you identify potential areas for improvement in your workplace safety and compliance. It covers essential regulations for businesses in Wilmington, Delaware.

By [Tupp Signs](#)

# Workplace Safety

Proper signage and clear labeling are essential for maintaining workplace safety standards and OSHA compliance.



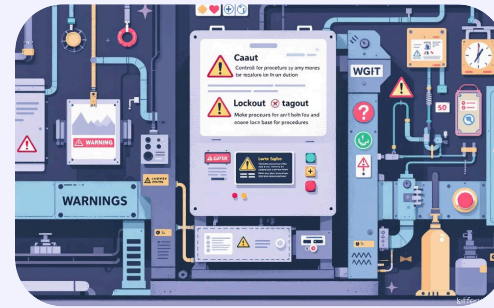
## Hazard Marking

Ensure all hazardous areas are clearly marked with visible warning signs and proper barriers



## Emergency Equipment

Fire extinguishers must be properly labeled, easily accessible, and regularly inspected



## Machine Safety

All equipment should display clear safety labels and lockout/tagout procedures



## Signage Compliance

Exit signs must be illuminated and unobstructed, with multilingual signage for diverse workforces



# ANSI Compliance

ANSI standards ensure consistent safety communication through standardized symbols and color coding systems.

## Safety Symbols

Are safety symbols up-to-date and standardized?

## Color Codes

Are color codes used consistently?



# ADA Compliance

Ensure your signage meets ADA requirements through proper accessibility features and tactile elements.

## Signage Accessibility

Is signage accessible to people with disabilities?

## Braille and Tactile Elements

Are braille and tactile elements used where needed?



# Why Compliance Matters

Regulatory compliance protects your business legally while ensuring employee safety and building customer trust.



## Legal Obligations

Failing to comply with safety regulations can lead to fines, penalties, and even legal action.



## Employee Safety

A safe workplace fosters a positive work environment and reduces the risk of accidents and injuries.



## Customer Confidence

Compliance demonstrates your commitment to safety and inspires trust among customers and stakeholders.

# Proactive Steps for Success

Take control of your compliance journey through regular inspections, proper signage implementation, and staying current with regulations.

1

Conduct regular workplace inspections to identify potential hazards.

2

Invest in proper signage and training to ensure all employees are aware of safety procedures.

3

Stay informed about the latest regulations and updates to maintain compliance.





# Get Expert Guidance

Partner with compliance experts who will guide you through consultation, assessment, and implementation of effective signage solutions.

Schedule a free consultation to discuss your compliance needs.

1

Receive a comprehensive signage audit to identify areas for improvement.

2

Benefit from expert advice and customized signage solutions.

3



## Contact Us Today

- **Phone:** (866) 324-7446
- **Email:** [info@tuppsigns.com](mailto:info@tuppsigns.com)
- **Address:** 457 E. New Churchman's Road, New Castle, DE 19720

With over 25 years of experience, Tupp Signs is your trusted partner for comprehensive signage solutions in Wilmington, Delaware. Our expert team specializes in regulatory compliance, safety signage, and custom business displays. Whether you need ADA-compliant signs, OSHA-mandated safety markers, or eye-catching business signage, we're here to help create a safer, more welcoming workplace for your team and customers.

Reach out today for a free consultation and discover how we can transform your facility's safety and visibility.