

At the Start... Consider the **FINISH.**



Architectural Signage

steel art

For **72 YEARS**, Steel Art Company has been manufacturing premium quality architectural signage, metal letters, and logotypes.

With expert project advice from a team of design professionals and skilled craftspeople with generations of experience, we are fully committed to serving your requirements. Each department of Steel Art – customer service, accounting, sales, and manufacturing – is professionally adept to assist you, and all are prepared to add value by any means possible.

In 2021, Steel Art stepped up to the plate with the increased demand for interior Wayfinding Solutions by reworking manufacturing space adding capacity for direct printing, braille, laser cutting and assembly of interior signage for larger scale projects.

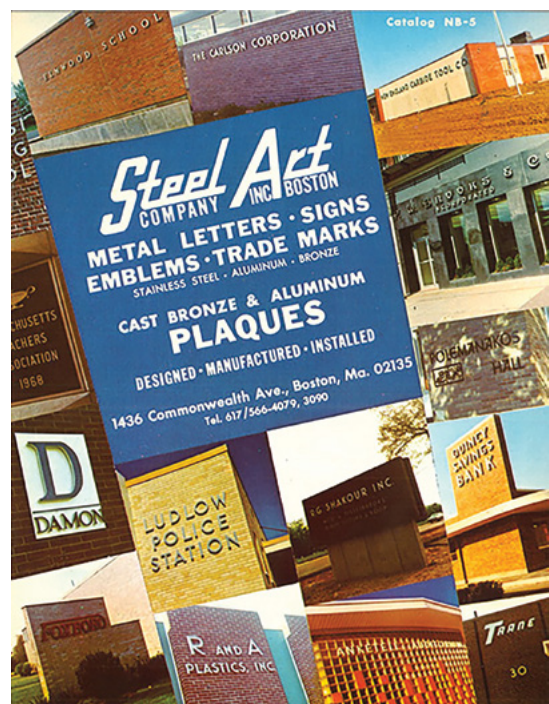
Contact us for a tour of our facility or to set up a live demonstration of all our product offerings.



www.steelartco.com

Our website showcases our broad array of products, along with the unsurpassed custom finishes that we offer exclusively for the sign trade. We have many illuminated special effects helping to visualize real life applications. You will also find several videos showing manufacturing processes to better understand the products.

Sales inquires to: sales@steelartco.com



1952 Catalog by Norbert Borell



Vintage advertisement announcing large expansion move

Contact us today for more information or to set up a **LIVE VIDEO DEMONSTRATION**

Our Product Line Is **YOUR** Product Line

SOLID CUT DESIGNS

- Stainless Steel..... 4
- Aluminum..... 4
- Yellow Brass 5
- Brass..... 5
- Bronze..... 6
- Copper..... 6
- Bevel Edge..... 7
- Prismatic 7
- Acrylic..... 8
- Metalam™..... 9
- Acrylic Variations 9

FABRICATED DIMENSIONAL DESIGNS

- Stainless Steel..... 10
- Titanium 10
- Aluminum..... 11
- Anodized Aluminum 11
- Yellow Brass 12
- Brass..... 12
- Bronze..... 13
- Copper..... 13
- Prismatic 14
- Bevel Edge..... 14
- Perforated 15
- ThinTrim™ & ThinTrim Plus™ 15
- Day/Night Acrylic 16
- Perforated Day/Night Vinyl 16
- Centerline™ 17
- Marqué™ 17

ILLUMINATED DESIGNS

- Edgelit™ 18
- Halo lit Options 19
- Acrylit™ 20
- Sidelit™ 20
- Hotel Room Signage 21
- Image Wrap™ 22
- Light Engine™ 23

CUSTOM PRODUCTS

- Direct Print 24
- ADA Braille..... 25
- Etching..... 25
- Window Sliders™ 26
- Carbon Steel..... 26
- Freestanding Designs 27

ADDITIONAL RESOURCES

- Metal Finishes 28
- Color Systems 30
- UL Listed Products 30
- Acrylic #2447 & #7328 31
- LED Facts 31
- Passivation 31
- Tough Template™ 34
- Installer's Assistant 32
- Art for Approval (AFA)..... 32
- Installation Hardware..... 33



SOLID CUT
PAGES 4-9

ACRYLIC
PAGES 8-9



FABRICATED
PAGES 10-17

MARQUÉE™
PAGE 17



THINTRIM™
PAGE 15

MORE RESOURCES
PAGES 28-33

CUSTOM PROTOTYPES



Contact Steel Art for information on custom prototypes.

Let's Build Something New... TOGETHER.

Steel Art understands that, for the contractor or end user, the selection of a manufacturer comes down to the prototype that has been submitted.

No matter what design challenge you face, Steel Art can make it happen. Our reputation is such that we often receive the most difficult and complicated projects in the industry and we're always up for the challenge. Steel Art is continually experimenting with the latest manufacturing tools and materials in order to bring new products to the sign industry. We have a solution to your customers unique prototype demands.



STAINLESS STEEL

Stainless Steel alloy 304 is a general purpose alloy, very durable and easy to maintain in exterior and interior applications. Alloy 316 performs better in highly corrosive, salt air environments, such as industrial, coastal vicinities or areas know for high levels of atmospheric pollution. All stainless steel products are automatically passivated when in exterior applications. This process aids in inhibiting oxidation and staining. See page 33 for additional information on "Passivation".

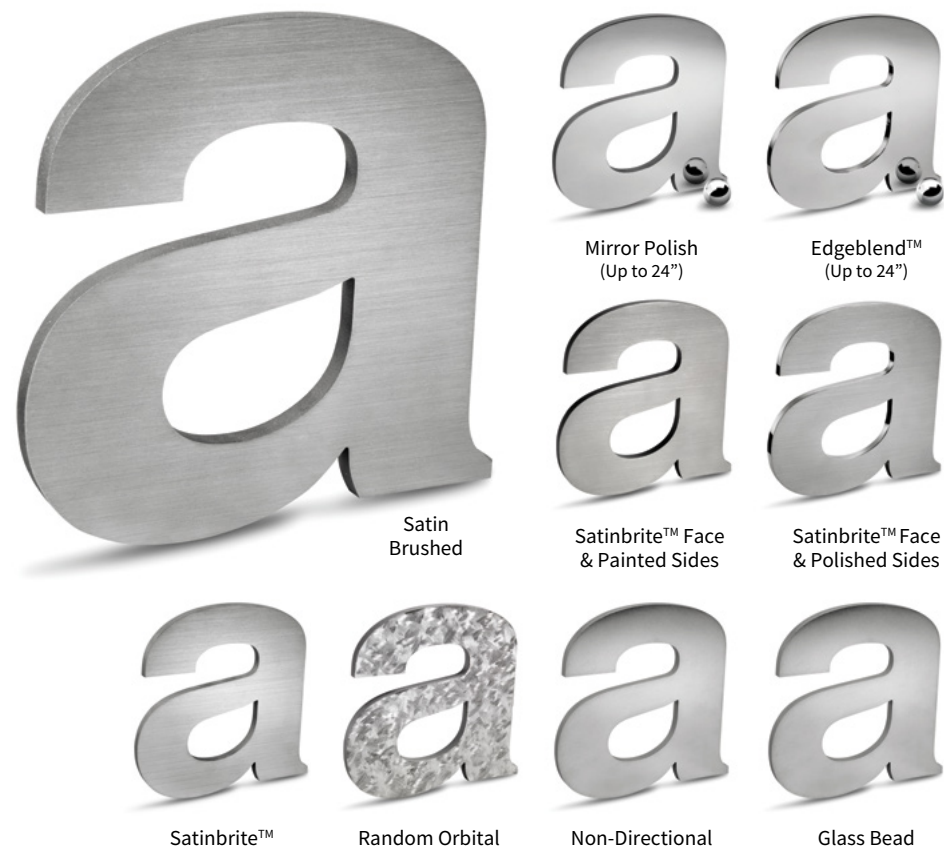
SIZE RANGE

- Height: 0.75" - 48" | Depth: .063" - 2"

SPECIFICS

- **Lifetime Guarantee** on craftsmanship
- Color matches by Matthews or AkzoNobel Systems
- Actual finish & color samples available
- **Tough Template™ & Installer's Assistant™** available on all orders (see page 34)

Mounting methods are available in many variations. Please view on our website and/or discuss with your Project Manager.



ALUMINUM

Aluminum alloy 5052 is offered because of its strength, corrosion resistance and value. Aluminum presents a naturally beautiful luster regardless of the finish chosen. Some of the most popular options include satin, mirror polish, paint or powder coat. Natural aluminum is protected with weatherometer proven, clear interior lacquer or exterior powder coat.

SIZE RANGE

- Height: 0.75" - 60" | Depth: .063" - 2"

SPECIFICS

- **Lifetime Guarantee** on craftsmanship
- Color matches by Matthews or AkzoNobel Systems
- Actual finish & color samples available
- **Tough Template™ & Installer's Assistant™** available on all orders (see page 34)

Mounting methods are available in many variations. Please view on our website and/or discuss with your Project Manager.



YELLOW BRASS

Yellow Brass alloy 260 provides a distinguished yellow gold appearance. Virtually all available finishes offer a warm architectural look in interior applications, while shades of oxidation perform well in both the interior and exterior. All yellow brass solid cut letters have a protective clear coat.

SIZE RANGE

- Height: 0.75" - 36" | Depth: .063" - 1"

SPECIFICS

- **Lifetime Guarantee** on craftsmanship
- Color matches by Matthews or AkzoNobel Systems
- Actual finish & color samples available
- **Tough Template™ & Installer's Assistant™** available on all orders (see page 34)

Mounting methods are available in many variations. Please view on our website and/or discuss with your Project Manager.



BRASS

Brass alloy 280 provides a distinguished gold appearance. Virtually all available finishes offer a warm architectural look in interior applications, while shades of oxidation perform well in both the interior and exterior. All brass solid cut letters have a protective clear coat.

SIZE RANGE

- Height: 0.75" - 36" | Depth: .063" - 1"

SPECIFICS

- **Lifetime Guarantee** on craftsmanship
- Color matches by Matthews or AkzoNobel Systems
- Actual finish & color samples available
- **Tough Template™ & Installer's Assistant™** available on all orders (see page 34)

Mounting methods are available in many variations. Please view on our website and/or discuss with your Project Manager.



BRONZE

Bronze alloy 220 provides a distinguished reddish gold appearance. Virtually all available finishes offer a warm architectural look in interior applications, while shades of oxidation perform well in both the interior and exterior. All bronze solid cut letters have a protective clear coat.

SIZE RANGE

- Height: 0.75" - 36" | Depth: .063" - 1"

SPECIFICS

- **Lifetime Guarantee** on craftsmanship
- Color matches by Matthews or AkzoNobel Systems
- Actual finish & color samples available
- **Tough Template™ & Installer's Assistant™** available on all orders (see page 34)

Mounting methods are available in many variations. Please view on our website and/or discuss with your Project Manager.



BEVEL EDGE

Bevel edge solid cut plate brings metal letter signage to a whole new upscale level. Mirror polish bevels catch the light and sparkle as you walk by... a truly special way of attracting attention. Hand craftsmanship beyond words, rarely seen these days and yet readily available as a standard product. Most architectural metals are available in varying formats, ask for more details.

SIZE RANGE

- Height: 3" - 24" | Depth: .25" - 1"

SPECIFICS

- **Lifetime Guarantee** on craftsmanship
- Color matches by Matthews or AkzoNobel Systems
- Actual finish & color samples available
- **Tough Template™ & Installer's Assistant™** available on all orders (see page 34)

Mounting methods are available in many variations. Please view on our website and/or discuss with your Project Manager.



COPPER

Copper alloy 110 provides a distinguished reddish appearance. Virtually all available finishes offer a warm architectural look in interior applications, while shades of oxidation perform well in both the interior and exterior. All copper solid cut letters have a protective clear coat.

SIZE RANGE

- Height: 0.75" - 36" | Depth: .063" - 1"

SPECIFICS

- **Lifetime Guarantee** on craftsmanship
- Color matches by Matthews or AkzoNobel Systems
- Actual finish & color samples available
- **Tough Template™ & Installer's Assistant™** available on all orders (see page 34)

Mounting methods are available in many variations. Please view on our website and/or discuss with your Project Manager.



PRISMATIC

Show your clients an option that will be sure to inspire! Prismatic letters are crafted in most architectural materials: Aluminum, Brass, Yellow Brass, Bronze, Copper, and acrylic. Finishes available in mirror polish, brushed, oxidized, painted and powder coat. Add an extra level of grandeur with these magnificent, hand-crafted letters.

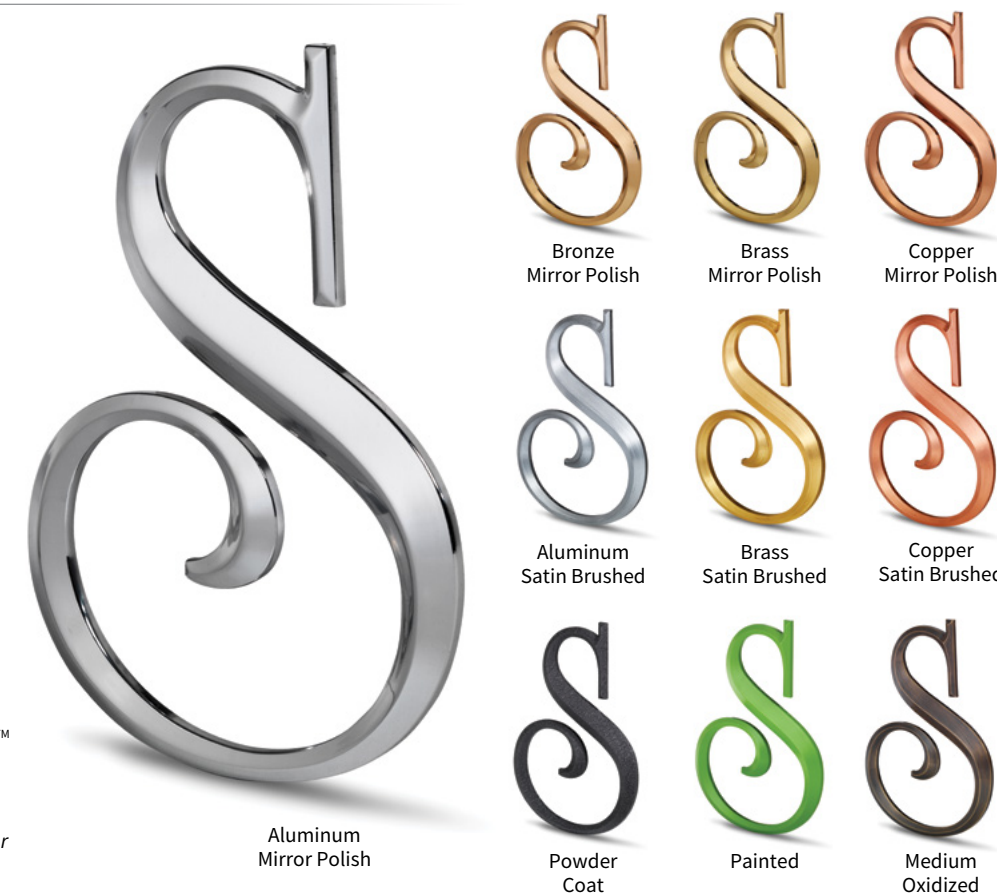
SIZE RANGE

- Height: 2" - 24" | Depth: .25" - 1"

SPECIFICS

- **Lifetime Guarantee** on craftsmanship
- Color matches by Matthews or AkzoNobel Systems
- Actual finish & color samples available
- **Tough Template™ & Installer's Assistant™** available on all orders (see page 34)

Mounting methods are available in many variations. Please view on our website and/or discuss with your Project Manager.



ACRYLIC

Several options are available for acrylic letters. The most popular is painted face and side with all PMS color matches available. Acrylic letters are cut with sharp square edges, corners and crisp details... never radiused. Premium quality cell cast acrylic is used and can be installed in both interior and exterior applications.



#100 - Painted Face & Sides



#101 - Painted Face & Back with Clear Sides*
(*Up to .5" deep)



#102 - Clear Face with Painted Sides & Back*
(*Up to .75" deep)



#103 - Non-glare Face, Clear Sides, Painted Back



#104 - Non-glare Face with Painted Sides & Back



#105 - Non-glare Face & Sides with Painted Back



#106 - Non-glare Face & Sides



#107 - Clear Face & Sides

SIZE RANGE
• Height: 1" - 48" | Depth: .063" - 1"

SPECIFICS
• **Lifetime Guarantee** on craftsmanship
• Color matches by Matthews or AkzoNobel Systems
• Actual finish & color samples available
• **Tough Template™ & Installer's Assistant™** available on all orders (see page 34)

Mounting methods are available in many variations. Please view on our website and/or discuss with your Project Manager.

METALAM™

Metalam™ letters are a cost-effective alternative to the solid metal letter. Metalam™ letters have a genuine Chemetal™ face, adhered to solid acrylic using a high-pressure thermal lamination technique. The high-pressure thermal lamination yields an extremely strong, superior bond, making these letters tough but lightweight. Sides are painted to match. Metalam™ can be used in many interior signage applications, including letters, logos and plaques.

SIZE RANGE
• Height: 1.5" - 24" | Depth: .125" - 1"

SPECIFICS
• **Lifetime Guarantee** on craftsmanship
• Color matches by Matthews or AkzoNobel Systems
• All Chemetal™ & Wilson Art finishes available
• Actual finish & color samples available
• **Tough Template™ & Installer's Assistant™** available on all orders (see page 34)

Mounting methods are available in many variations. Please view on our website and/or discuss with your Project Manager.



915 - Brushed Bronze

Popular Chemetal™ 900 Series:



View the entire Chemetal™ list offerings: www.Chemetal.com

ACRYLIC VARIATIONS

IceTone™: Clear acrylic painted second surface or satin brushed painted second surface.

Metalam Plus™: architectural metal face laminated to clear acrylic backer.

Metalam SoftGlow™: Finished architectural face laminated to clear acrylic glass beaded backer with colored vinyl second surface.

X-Deep™: Finished architectural metal face laminated to 1.5" or 2" thick acrylic back painted or frosted sides.



IceTone™
Painted Back
(*Up to .75" deep)



Metalam Plus™
SoftGlow™



Metalam X-Deep™
Polished Bronze Face



IceTone™
Satin Copper
(*Up to .75" deep)



Metalam Plus™
Painted Back



Metalam Plus™
#902 Brushed Satin Face

SIZE RANGE
• Height: 2" - 18" | Depth: .25" - 2"

SPECIFICS
• Interior use only
• **Lifetime Guarantee** on craftsmanship
• Color matches by Matthews or AkzoNobel Systems
• Actual finish & color samples available
• **Tough Template™ & Installer's Assistant™** available on all orders (see page 34)

Mounting methods are available in many variations. Please view on our website and/or discuss with your Project Manager.

STAINLESS STEEL

Stainless Steel alloy 304 is a general purpose alloy, very durable and easy to maintain in exterior and interior applications. Alloy 316 performs better in highly corrosive, salt air environments, such as industrial, coastal vicinities or areas know for high levels of atmospheric pollution. All stainless steel products are automatically passivated when used in exterior applications, at no additional charge. This process aids in inhibiting oxidation and staining. See page 33 for additional information on "Passivation".

SIZE RANGE

- Height: 3" - 60" | Depth: 0.375" - 6"

LED ILLUMINATION

- Minimum Height: 4" | Minimum Depth: 0.5" | Maximum Depth: 6"

SPECIFICS

- **Lifetime Guarantee** on craftsmanship
- Color matches by Matthews or AkzoNobel Systems
- Actual finish & color samples available
- **Tough Template™** available on all orders (see page 34)



Satinbrite™

Minimum stroke requirements for LED letters vary. To be accurate in your design, please contact your Project Manager.



See pages 18 & 19 for illumination options.



Mirror Polish

Powder Coat



Satin #4 Brushed

Satinbrite™ Face & Polished Sides



Non-Directional

Random Orbital

See pages 18 & 19 for illumination options.

TITANIUM

Titanium coated stainless steel offers enhanced durability for exterior applications and a beautiful alternative for interiors. NuGold™, NuBronze™, NuCopper™, Black and Medium Oxidize are titanium coated stainless steel 304. These materials are a cost-effective alternative to brass, bronze, and copper with a Ten Year Warranty for exterior applications. All fabricated Titanium letters are available without a silver edge, which makes them ideal for "eye level" installations. Ask your project manager about pricing.

SIZE RANGE

- Height: 3" - 48" | Depth: 0.375" - 6"

LED ILLUMINATION

- Minimum Height: 4" | Minimum Depth: 0.5" | Maximum Depth: 6"

SPECIFICS

- **Lifetime Guarantee** on craftsmanship
- Actual finish & color samples available
- **Tough Template™** available on all orders (see page 34)



NuGold™
Satin Brushed

Minimum stroke requirements for LED letters vary. To be accurate in your design, please contact your Project Manager.



NuGold™
Mirror Polish

Medium Oxidized
Satin Brushed



NuCopper™
Mirror Polish

NuBronze™
Satin Brushed



Black
Mirror Polish

Black
Satin Brushed

Mounting methods are available in many variations. Please view on our website and/or discuss with your Project Manager.

Visit our website for more finish options: steelartco.com

ALUMINUM

Aluminum alloy 5052 is offered because of its strength, corrosion resistance and value. Aluminum presents a naturally beautiful luster regardless of the finish chosen. Some of the most popular options include satin, mirror polish, paint or powder coat. Natural aluminum is protected with weatherometer proven, clear interior lacquer or exterior powder coat.

SIZE RANGE

- Height: 3" - 60" | Depth: 0.375" - 6"

LED ILLUMINATION

- Minimum Height: 4" | Minimum Depth: 0.5" | Maximum Depth: 6"

SPECIFICS

- **Lifetime Guarantee** on craftsmanship
- Color matches by Matthews or AkzoNobel Systems
- Actual finish & color samples available
- **Tough Template™** available on all orders (see page 34)



Satin
Brushed

Minimum stroke requirements for LED letters vary. To be accurate in your design, please contact your Project Manager.



See pages 18 & 19 for illumination options.



Bright Aluminum
Polish (Up to 24")

Satinbrite™



APU Paint
PMS Matching

Powder Coat



Non-Directional

Random Orbital

See pages 18 & 19 for illumination options.

ANODIZED ALUMINUM

Aluminum presents a naturally beautiful luster. When extreme durability, architectural embellishment and "value engineering" is of major concern, these color anodized fabricated letters must be considered. Guaranteed for 15 years in exterior application and available in a myriad of architectural colors and finishes they are a fit for any project.

SIZE RANGE

- Height: 3" - 24" | Depth: 0.375" - 4"

LED ILLUMINATION

- Minimum Height: 6" | Minimum Depth: 0.5" | Maximum Depth: 4"

SPECIFICS

- **Lifetime Guarantee** on craftsmanship
- Color matches by Matthews or AkzoNobel Systems
- Actual finish & color samples available
- **Tough Template™** available on all orders (see page 34)



Medium Bronze
Satin

Minimum stroke requirements for LED letters vary. To be accurate in your design, please contact your Project Manager.



Bright Aluminum
Polish (Up to 24")

Bright Satin
Brushed



Bright
Brushed Gold

Bright Gold
Polish (Up to 24")



Gold Satin

Black Satin

Mounting methods are available in many variations. Please view on our website and/or discuss with your Project Manager.

Visit our website for more finish options: steelartco.com

YELLOW BRASS

Yellow Brass alloy 260 provides a distinguished yellow gold appearance. Virtually all available finishes offer a warm architectural look in interior applications, while shades of oxidation perform well in both the interior and exterior. All yellow brass fabricated letters have a protective clear coat.



Satin Brushed

SIZE RANGE

- Height: 3" - 36" | Depth: 0.375" - 6"

LED ILLUMINATION

- Minimum Height: 4" | Minimum Depth: 0.5" | Maximum Depth: 6"

SPECIFICS

- **Lifetime Guarantee** on craftsmanship
- Color matches by Matthews or AkzoNobel Systems
- Actual finish & color samples available
- **Tough Template™** available on all orders (see page 34)

Minimum stroke requirements for LED letters vary. To be accurate in your design, please contact your Project Manager.



See pages 18 & 19 for illumination options.



Mirror Polish (Up to 24")

Medium Oxidized Satin Brushed



Satinbrite™ Face & Polished Sides

Satinbrite™ Face & Painted Sides



Non-Directional

Random Orbital

See pages 18 & 19 for illumination options.

BRASS

Brass alloy 280 provides a distinguished gold appearance. Virtually all available finishes offer a warm architectural look in interior applications, while shades of oxidation perform well in both the interior and exterior. All brass fabricated letters have a protective clear coat.



Mirror Polish (Up to 24")

SIZE RANGE

- Height: 3" - 36" | Depth: 0.375" - 6"

LED ILLUMINATION

- Minimum Height: 4" | Minimum Depth: 0.5" | Maximum Depth: 6"

SPECIFICS

- **Lifetime Guarantee** on craftsmanship
- Color matches by Matthews or AkzoNobel Systems
- Actual finish & color samples available
- **Tough Template™** available on all orders (see page 34)

Minimum stroke requirements for LED letters vary. To be accurate in your design, please contact your Project Manager.



Satin Brushed

Medium Oxidized Satin Brushed



Satinbrite™

Satinbrite™ Face & Polished Sides



Non-Directional

Random Orbital

Mounting methods are available in many variations. Please view on our website and/or discuss with your Project Manager.

Visit our website for more finish options: steelartco.com

BRONZE

Bronze alloy 220 provides a distinguished reddish gold appearance. Virtually all available finishes offer a warm architectural look in interior applications, while shades of oxidation perform well in both the interior and exterior. All bronze fabricated letters have a protective clear coat.



Medium Oxidized Satin Brushed

SIZE RANGE

- Height: 3" - 36" | Depth: 0.375" - 6"

LED ILLUMINATION

- Minimum Height: 4" | Minimum Depth: 0.5" | Maximum Depth: 6"

SPECIFICS

- **Lifetime Guarantee** on craftsmanship
- Color matches by Matthews or AkzoNobel Systems
- Actual finish & color samples available
- **Tough Template™** available on all orders (see page 34)

Minimum stroke requirements for LED letters vary. To be accurate in your design, please contact your Project Manager.



See pages 18 & 19 for illumination options.



Mirror Polish (Up to 24")

Satinbrite™



Satinbrite™ Face & Polished Sides

Face Painted & Satinbrite™ Sides



Non-Directional

Random Orbital

See pages 18 & 19 for illumination options.

COPPER

Copper alloy 110 provides a distinguished reddish appearance. Virtually all available finishes offer a warm architectural look in interior applications, while shades of oxidation perform well in both the interior and exterior. All copper fabricated letters have a protective clear coat.



Satinbrite™

SIZE RANGE

- Height: 3" - 36" | Depth: 0.375" - 6"

LED ILLUMINATION

- Minimum Height: 4" | Minimum Depth: 0.5" | Maximum Depth: 6"

SPECIFICS

- **Lifetime Guarantee** on craftsmanship
- Color matches by Matthews or AkzoNobel Systems
- Actual finish & color samples available
- **Tough Template™** available on all orders (see page 34)

Minimum stroke requirements for LED letters vary. To be accurate in your design, please contact your Project Manager.



Mirror Polish (Up to 24")

Medium Oxidized Satin Brushed



Satinbrite™ Face & Polished Sides

Random Orbital



Non-Directional

Verde Green Patina

Mounting methods are available in many variations. Please view on our website and/or discuss with your Project Manager.

Visit our website for more finish options: steelartco.com

PRISMATIC

Show your clients an option that will be sure to inspire! Prismatic letters are crafted in most architectural materials. Finishes available in mirror polish, brushed, oxidized, painted and powder coat. Add an extra level of grandeur with these magnificent, hand-crafted letters.

SIZE RANGE

- Height: 6" - 24" | Depth: 1" - 3"

LED ILLUMINATION

- Min. Height: 6" | Min. Depth: 1.5" | Maxi. Depth: 4"

SPECIFICS

- Interior Use Only For Brass, Bronze & Copper
- **Lifetime Guarantee** on craftsmanship
- Color matches by Matthews or AkzoNobel Systems
- Actual finish & color samples available
- **Tough Template™** available on all orders (see page 34)

Minimum stroke requirements for LED letters vary. To be accurate in your design, please contact your Project Manager.



NuBronze™ Titanium Mirror Polish



Stainless Steel Satin Brushed

Powder Coat

See pages 18 & 19 for illumination options.

BEVEL EDGE

Breathtaking, high class fabricated letters with jewelry like beveled edge faces, equipped with LED illumination...even RGBW. This sparkly construction is available in Stainless Steel and Titanium in all architectural finishes. Acrylic faces in standard colors as well as translucent vinyl adds to the many design possibilities. These exclusive letters can be illuminated through the face, as well as halo lit. An acrylic lens may be added to the back, as in Design 100 for that extra attention-grabbing effect.

SIZE RANGE

- Height: 10" - 36" | Depth: 1.5" - 4" (2.5" for illuminated face)

SPECIFICS

- Finishes Include: Mirror Polish, Satin Brush, Painted, Powder Coat, Non-Directional or Random Orbital
- **Lifetime Guarantee** on craftsmanship
- Color matches by Matthews or AkzoNobel Systems
- Actual finish & color samples available
- **Tough Template™** available on all orders (see page 34)

Minimum stroke requirements for LED letters vary. To be accurate in your design, please contact your Project Manager.



NuGold™ Mirror Polished



Stainless Steel Satin Brushed

Stainless Steel Powder Coat

Mounting methods are available in many variations. Please view on our website and/or discuss with your Project Manager.

Visit our website for more finish options: steelartco.com

PERFORATED

Perforated sides are a real "eye catcher". When illuminated, the perforated returns cast a "spray" of light against the background wall, focusing attention on the business. A restaurant, retail establishment or any entranceway in competition with nearby businesses will benefit with this unique type of signage. Several materials and finish options are available for your creative designs. All levels of white, colors and RGBW are also available and of course everything will be provided for a correct UL compliant installation. Perforated designs can be fabricated without illumination.

SIZE RANGE

- Height: 10" - 48" | Depth: 2" - 6"

SPECIFICS

- **Lifetime Guarantee** on craftsmanship
- Color matches by Matthews or AkzoNobel Systems
- Actual finish & color samples available
- **Tough Template™** available on all orders (see page 34)

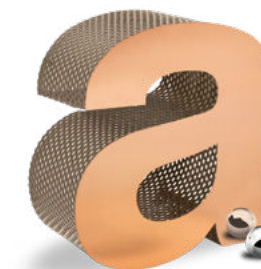


NuGold™ Titanium Satin Brushed Face

Minimum stroke requirements for LED letters vary. To be accurate in your design, please contact your Project Manager.



Stainless Steel Satin Brushed Face



NuCopper™ Mirror Polish Face (Non-Illuminated Construction)

THINTRIM™ & THINTRIM PLUS™

With brilliant details, including letter depth as shallow as 2", this exciting new product line is now available exclusively from Steel Art. Our ThinTrim™ and ThinTrim Plus™ offers many custom features. Both can be illuminated thru the face or if desired thru the back as well. Depending on letter height, the ThinTrim™ retainer lip is uniquely 1/8" wide bringing an architectural note to its appearance. Now the designer has the choice between plastic trim and higher end, mirror polished metals. Select the proper white acrylic (#2447 or #7328) or colored face, translucent PMS vinyl and LED combination and you have endless possibilities, including RGBW.

SIZE RANGE

- Height: 6" - 48" | Depth: 2" - 6"

SPECIFICS

- **Lifetime Guarantee** on craftsmanship
- Color matches by Matthews or AkzoNobel Systems
- Actual finish & color samples available
- **Tough Template™** available on all orders (see page 34)



Stainless Steel Mirror Polish

Minimum stroke requirements for LED letters vary. To be accurate in your design, please contact your Project Manager.



Mirror Polish Stainless Steel ThinTrim Plus™



APU Paint PMS Matching

Mounting methods are available in many variations. Please view on our website and/or discuss with your Project Manager.

Visit our website for more finish options: steelartco.com

DAY/NIGHT ACRYLIC

A new and more modern alternative to the perforated vinyl, Day/Night Acrylic offers you a clean, colored acrylic in two standard color options that will appear as a solid black or blue color during the day, but will illuminate white at night. This shows a more dense black and vibrant white when illuminated. Day/Night can be used for both interior and exterior applications. With the black Day/Night Acrylic, RGB LEDs can be used so color can show through.

SIZE RANGE
 • Height: 6" - 48" | Depth: 2" - 6"

- SPECIFICS**
- **Lifetime Guarantee** on craftsmanship
 - Color matches by Matthews or AkzoNobel Systems
 - Actual finish & color samples available
 - **Tough Template™** available on all orders (see page 34)

Minimum stroke requirements for LED letters vary. To be accurate in your design, please contact your Project Manager.



ThinTrim™ with Black Day/Night Acrylic - Not Lit



ThinTrim™ with Black or Blue Day/Night Acrylic - Lit



ThinTrim™ with Blue Day/Night Acrylic - Not Lit

CENTERLINE™

CenterLine™ is a new concept for illuminated letters with an acrylic strip of light down the side of the letter. Several materials and finish options are there for your creative designs. All levels of white, colors and RGBW are also available and of course everything will be provided for a correct UL compliant installation. May be used in both interior and exterior applications. The LEDs are warranted for 10 years. The LEDs can be replaced when expired.

SIZE RANGE & LED ILLUMINATION
 • Height: 6" - 24"
 • Channel Letters Acrylic Middle Strip: .125" - .5"

- SPECIFICS**
- **Lifetime Guarantee** on craftsmanship
 - Color matches by Matthews or AkzoNobel Systems
 - Actual finish & color samples available
 - **Tough Template™** available on all orders (see page 34)

Minimum stroke requirements for LED letters vary. To be accurate in your design, please contact your Project Manager.



Painted Stainless Steel with Red LED Illumination



Stainless Steel Mirror Polish



NuGold™ Satin

PERFORATED DAY/NIGHT VINYL

Perforated black vinyl applied to the faces appears "black-ish" during the day when not lit and turn "white-ish" at night when lit.

There are 3 options available to decorate the faces with color;

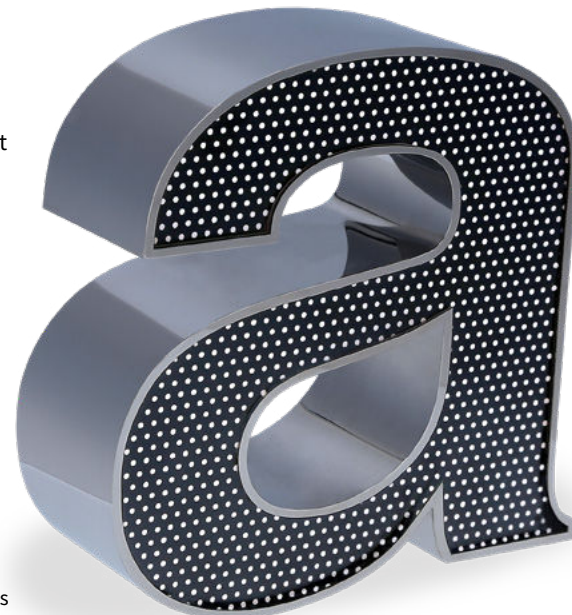
1. PMS Color matched perforated vinyl
2. Colored light showing thru perforated vinyl
3. Colored light showing thru colored vinyl

*A test sample of options 2 and 3 should be verified that the effect desired will be achieved.

SIZE RANGE
 • Height: 6" - 48" | Depth: 2" - 6"

- SPECIFICS**
- **Lifetime Guarantee** on craftsmanship
 - Color matches by Matthews or AkzoNobel Systems
 - Actual finish & color samples available
 - **Tough Template™** available on all orders (see page 34)

Minimum stroke requirements for LED letters vary. To be accurate in your design, please contact your Project Manager.



ThinTrim™ with Perforated Day/Night Vinyl - Lit



ThinTrim™ with Painted Perforated Day/Night Vinyl - Not Lit



ThinTrim™ with Perforated Day/Night Vinyl, with Translucent Vinyl on Acrylic Face - Not Lit

MARQUÉE™

Marquée™ letters are LED illuminated with simulated neon created by a push-thru acrylic lens or with simulated electric light bulbs. Illumination available in hundreds of colors. All architectural finishes, including powder coat are available.

SIZE RANGE
 • Height: 4" - 48" | Depth: 2" - 6"

LED ILLUMINATION
 • Height: 4" - 48" | Depth: 3" - 6"

- SPECIFICS**
- **Lifetime Guarantee** on craftsmanship
 - Color matches by Matthews or AkzoNobel Systems
 - Actual finish & color samples available
 - **Tough Template™** available on all orders (see page 34)

Minimum stroke requirements for LED letters vary. To be accurate in your design, please contact your Project Manager.



Double Line Powder Coat Finish



Double Line Powder Coat Finish



Thick & Thin Single Line Powder Coat Finish

Mounting methods are available in many variations. Please view on our website and/or discuss with your Project Manager.

Visit our website for more finish options: steelartco.com

Mounting methods are available in many variations. Please view on our website and/or discuss with your Project Manager.

Visit our website for more finish options: steelartco.com

EDGE LIT™

Originally developed for high-end retail signage, these illuminated letters look simply amazing in any setting, both interior and exterior. Easy to service and re-lamp with LEDs warrantied for 10 years. The Edgelit™ design was engineered to be super flexible with 11 variations at your command. All “K” values of white and dozens of translucent PMS colors are available for your creativity. Feel free to customize your design, using standard offerings at a value engineered price.


SIZE RANGE

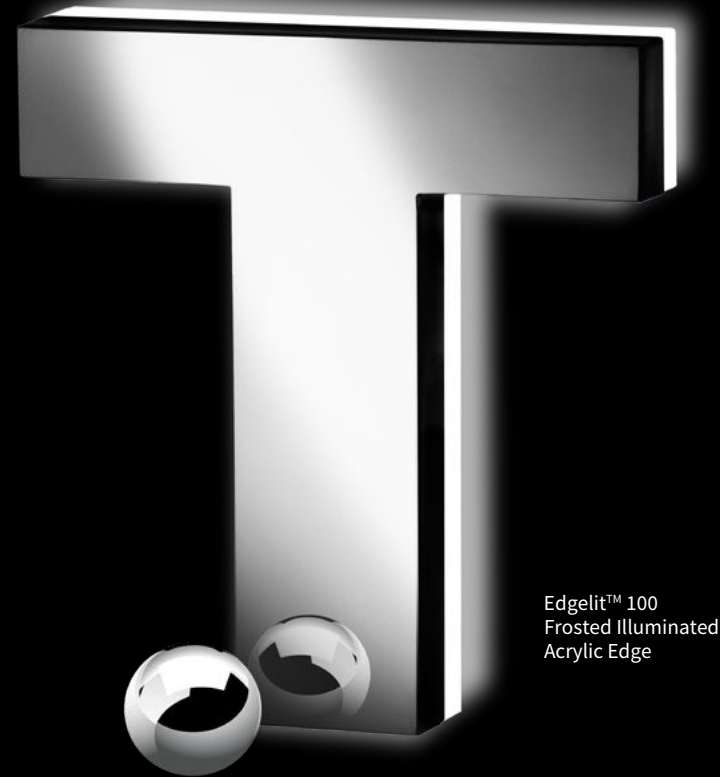
- Height: 4” - 48” | Depth: 2” - 6”
- Acrylic Projection: Trimless Face/Back: .25” - .75”
- Minimum Depth: 0.75” (Style 100 Only)

SPECIFICS

- **Lifetime Guarantee** on craftsmanship
- Actual finish & color samples available
- **Tough Template™** available on all orders (see page 34)

Mounting methods are available in many variations. Please view on our website and/or discuss with your Project Manager.

 Minimum stroke requirements for LED letters vary. To be accurate in your design, please contact your Project Manager.



Edgelit™ 100
Frosted Illuminated
Acrylic Edge



Edgelit™ 101
Face & Halo Lighting
Trimless

Edgelit™ 102
Face Lighting
Trimless

Edgelit™ 103
Back Lighting
Outline

Edgelit™ 104
Face & Back Lighting
Trimless

Edgelit™ 105
Stencil Cut Push Thru &
Halo Lighting



Edgelit™ 106
Stencil Cut Push Thru &
Back Lighting

Edgelit™ 107
Stencil Cut Push
Thru

Edgelit™ 108
Stencil Cut Face &
Back Lighting

Edgelit™ 109
Stencil Cut Face &
Halo Lighting

Edgelit™ 110
Stencil Cut
Face Lighting

HALO LIT OPTIONS

Shown below are some of the more popular Halo illuminated options. Not all represented here, and most fabricated product offerings can be Halo illuminated.



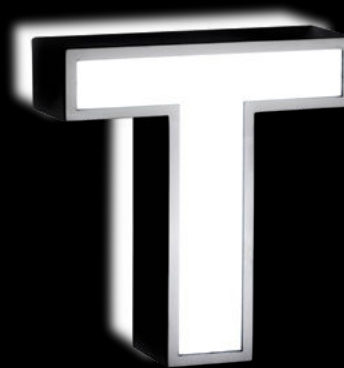
Fabricated Letter
Halo Lit



ThinTrim™
Face & Halo Lit



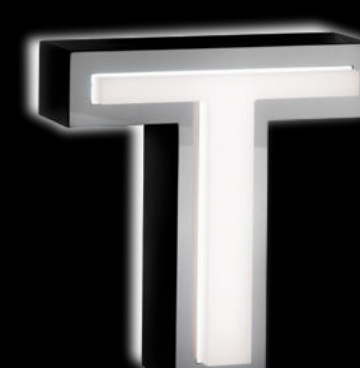
ThinTrim™
Transparent Vinyl Face & Halo Lit



Edgelit™ 109
Stencil Cut Face & Halo Lit



Edgelit™ 101
Trimless Face & Halo Lit



Edgelit™ 105
Stencil Cut Push Thru & Halo Lit



Fabricated Bevel Edge
Face & Halo Lit



Prismatic Fabricated
Halo Lit



Perforated Fabricated Letter
Halo Lit

To see more samples, visit us on our social media pages:  Instagram: @steelartco  facebook: @steelartco

For information on unbranded marketing materials contact: sales@steelartco.com

ACRYLIT™

Acrylit™ is manufactured from solid light diffused white acrylic 30mm thick (1.18") with a stainless steel closed back. May be used in both interior and exterior applications. The LEDs are warranted for 5 years interior use and 3 years in exterior use. The LEDs can be replaced when expired.

Available in many configurations including:

- Glowing Face & Side
- Painted Opaque Face/Glowing Side
- Translucent or Opaque Vinyl Face/Glowing Side
- Glowing Face/Painted Side

SIZE RANGE

- Height: 6" - 24" | Depth: 30mm | 1.25" Minimum Stroke

SPECIFICS

- **Lifetime Guarantee** on craftsmanship
- Color matches by Matthews or AkzoNobel Systems
- Actual finish & color samples available
- **Tough Template™** available on all orders (see page 34)

Mounting methods are available in many variations. Please view on our website and/or discuss with your Project Manager.



Acrylit™ with Vinyl Face & Sides

Acrylit™ with Vinyl Sides

Acrylit™ with Perforated Day/Night Vinyl on Face & Sides



SIDELIT™

Sidelit™ is manufactured from solid white acrylic with brilliant glowing white or LED colored sides. Faces can be opaque vinyl, Chemetal™ or a painted color. Sidelit™ was designed for both interior and exterior applications. The LEDs are warranted for 5 years interior use and 3 years in exterior use. The LEDs can be replaced when expired.

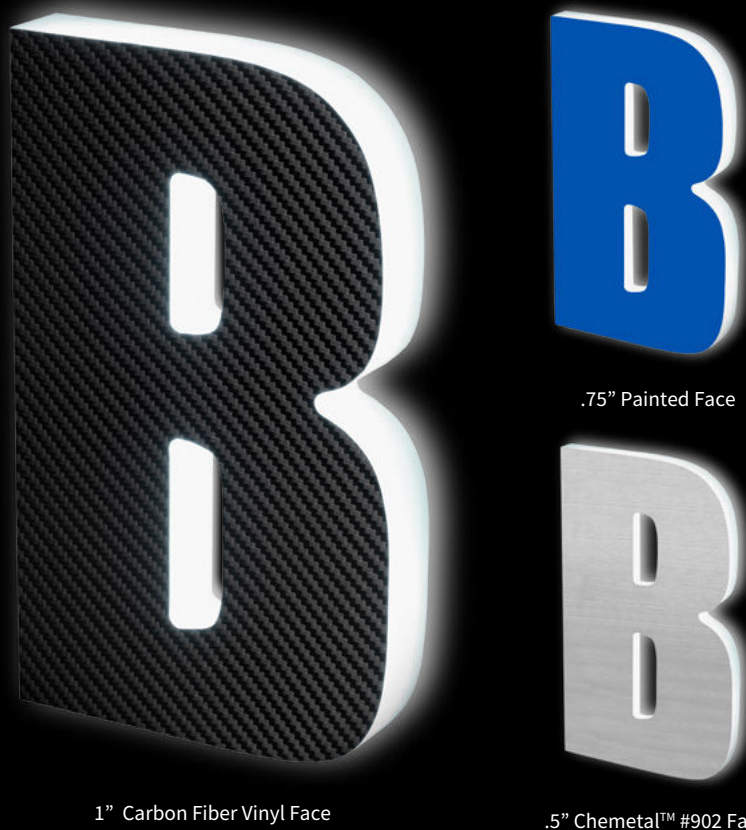
SIZE RANGE

- Height: 6" - 24"
- Depths: .5", .75" & 1"
- 1.25" Minimum Stroke

SPECIFICS

- **Lifetime Guarantee** on craftsmanship
- Color matches by Matthews or AkzoNobel Systems
- Actual finish & color samples available
- **Tough Template™** available on all orders (see page 34)

Mounting methods are available in many variations. Please view on our website and/or discuss with your Project Manager.



1" Carbon Fiber Vinyl Face

.75" Painted Face

.5" Chemetal™ #902 Face



HOTEL ROOM SIGNAGE

Beautiful illuminated room sign identifiers for hotels and condominium complexes. Warm white LED illumination says "Welcome, you are home." Available in all architectural metals and finishes, from basic to more deluxe versions, these room identifiers are suitable for all levels of signage applications. Several identifiers can be powered from one LED driver, making installation quick and easy. ADA compliant raised direct print or traditional Appliqué room numbers and Braille rasters meet code and aid the visually challenged. These signs are vandal resistant and UL approved.

Size (as shown)

- Front Identifier Plate: 3.75" x 8" x .188" (sizes can vary)
- Rear Light Bar: 1.5" x 7.75" x .75"

Light Source: 3000K (as shown)

- All "K Values" and colors available

Materials:

- Aluminum, Stainless Steel, Brass, Yellow Brass, Bronze, Copper and Metalam™

Finishes:

- Satinbrite™, Mirror Polish*, Non-Directional, Powder Coat, Metalam™ (all Chemetal™ offerings)

Mounting:

- Drywall fasteners, masonry anchors, wood screws or VHB tape and adhesive

*Applique and rasters only



Satin Brushed Stainless Steel



Bronze Satin Brushed Medium Oxidized



Black Powder Coat



Brushed Brass Aluminum Metalam™ #915



Brass Mirror Polished



IMAGE WRAP™

Ultra precise direct printing on the face and all four sides for a complete wrap of your interior design.

FULL COLOR PRINTING ON METAL SURFACES

Features & Benefits of Image Wrap™

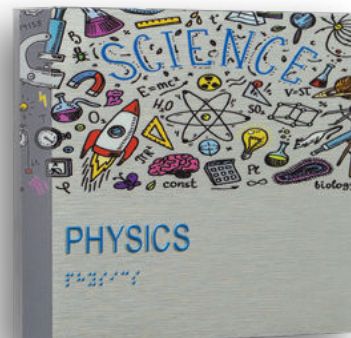
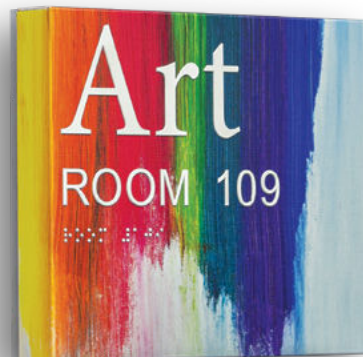
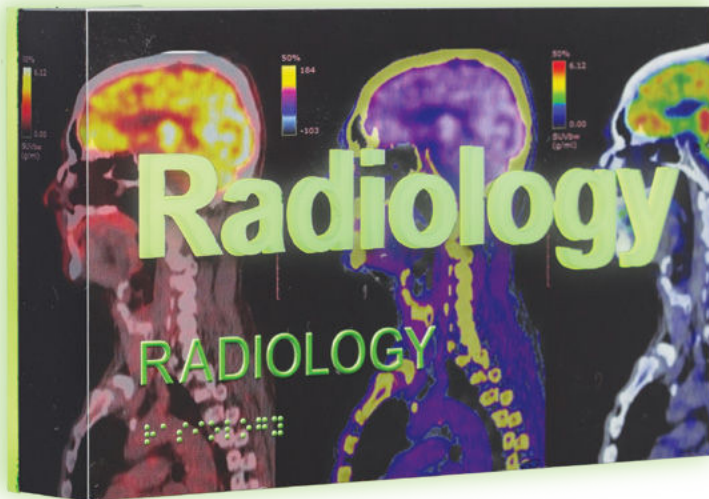
- Totally customizable designs
- Graphics printed on all surfaces
- UL Listed: In compliance with UL 48
- LED's available in all K-values, colors and RGB
- Stock or custom images readily available

ADA Compliant Braille

- Vandal resistant Braille lettering and rasters in PMS/CMYK

Now Available in Chemetal™

- Hundreds of finishes
- Illuminated or non-illuminated designs
- Cost effective option with a very high-end look



SIZE RANGE
• Height: 4" - 24" | Depth: .5" - 4"

- SPECIFICS
- **Lifetime Guarantee** on craftsmanship
 - Actual finish & color samples available

Minimum stroke requirements for LED letters vary. To be accurate in your design, please contact your Project Manager.



Visit our website for more samples: steelartco.com

LIGHT ENGINE™

The first-ever hybrid application of LED-illuminated interior signage panels with graphics and decorative laminates. Steel Art's newest patented technology comes in several design options and is totally customizable.

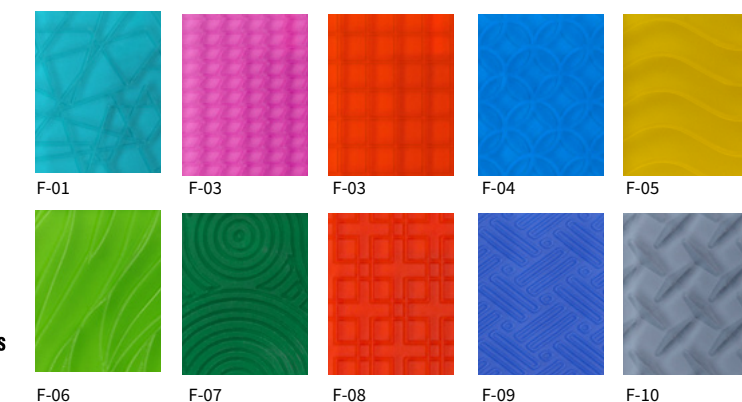
Visit our website to view more samples: steelartco.com/light-engine



- **Lifetime Guarantee** on craftsmanship
- Full range of LED temperatures and colors available
- Architectural metal laminates
- ADA compliant direct print graphics available
- Light Engines™ available with engineered acrylic frames with illumination
- Light Engines™ available with fabricated architectural metal frames
- Vandal resistant mounting
- UL compliant electrical wiring
- UL listed power supply and enclosure for fast, easy install
- There are several options for mounting based on your Light Engine™ specifications

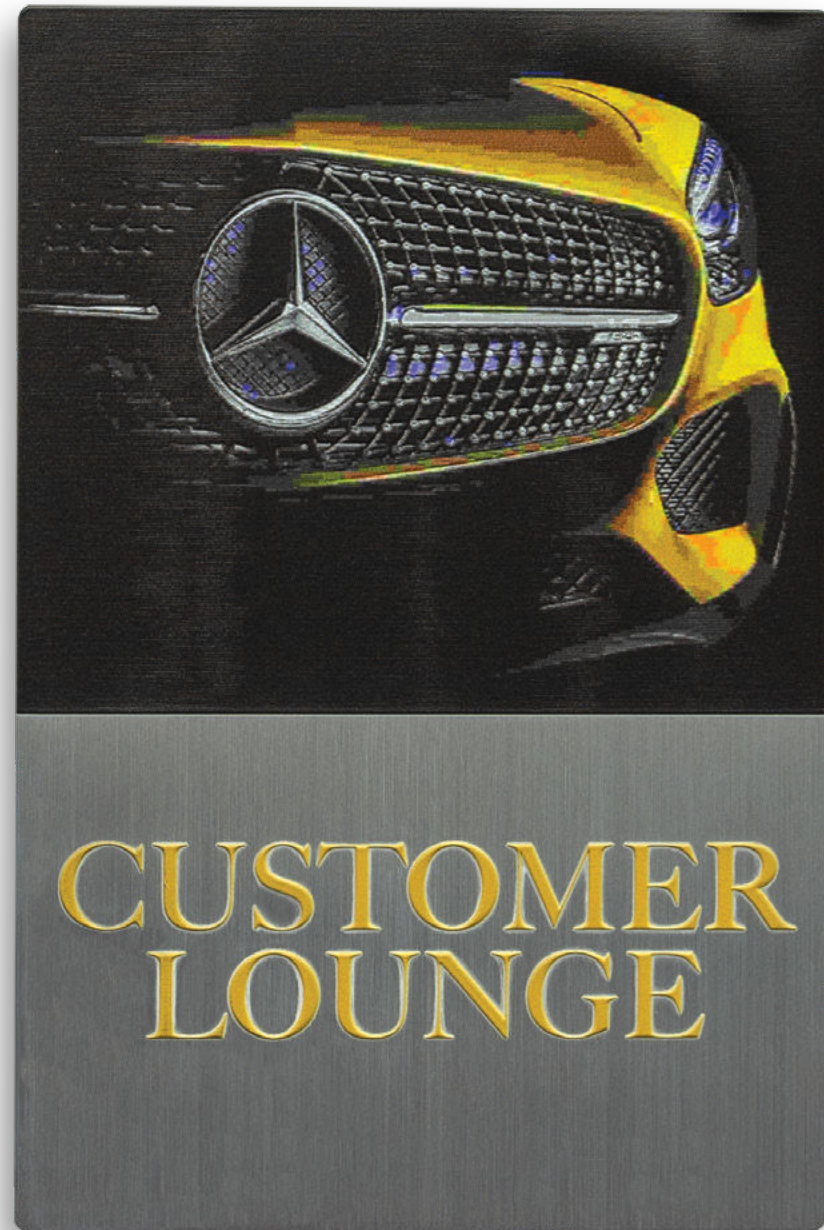
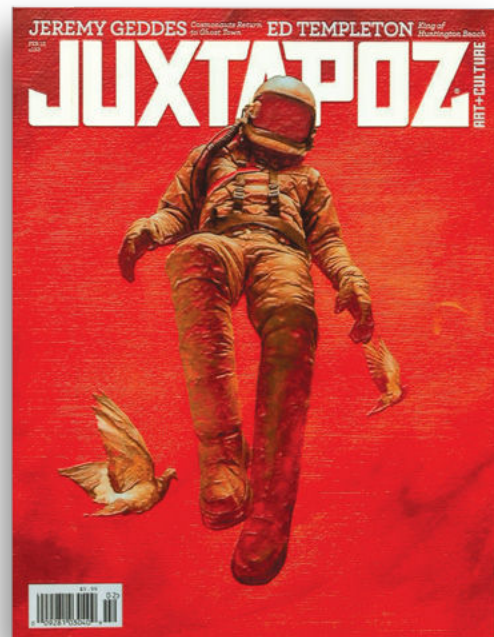
Freedom™ backgrounds

Acrylic panels available in a wide range of textures and colors.



DIRECT PRINT

Ultra precise printing, color matching and 3D textures are all achieved through this method. This technique is more cost effective than etching and provides ultra fine detail. Also create ADA compliant Braille tactile signage. You can also 1st or 2nd surface print on Acrylic (including colored, clear & non-glare), wood as well as any architectural metal. Custom color matching available.



Direct Printing is the Future of Sign Making.

- **Lifetime Guarantee** on craftsmanship
- UV stabilized inks; PMS/CMYK color matching
- Maximum Size of Printed Material: 60" x 36"
- Maximum Weight of printed material: 200 lbs
- Please reference the Mounting Options page for an overview of our product mounting systems

Visit our website for more samples: steelartco.com

ADA BRAILLE

ADA signage does not have to be plain and ordinary.

While still conforming to ADA (Americans With Disabilities Act) regulations, we utilize all of the available architectural metals and finishes giving the designer freedom to create a new signage program or to incorporate ADA signage into an existing environment. Often accompanied by appliqué or etching, our Braille application is flawless and stands the test of time and wear. We also offer direct print ADA approved Braille and raised tactile copy. Braille rasters are available in stainless steel, brass, and acrylic (black, white, clear). Steel Art can meet all the requirements for informational or directional signage, public access, or emergency and evacuation applications. Appliqué is offered in several standard colors as well as custom color orders.

- **Lifetime Guarantee** on craftsmanship
- Available in all architectural metals



Braille can be printed in any color.

Visit our website for more samples: steelartco.com

ETCHING

Recessed graphics are perfect for permanent signage applications requiring solid media.

All architectural metals can be used for etched graphics. Typical applications for etched signage are colorful logos, dedication plaques, charitable recognition plaques, and informational or directional way-finding. Design flexibility is a great characteristic of etched signage.

- **Lifetime Guarantee** on craftsmanship
- Steel Art uses an environmentally friendly etching process, eliminating hazardous chemical waste and creating a safe working environment
- Available in all architectural metals
- Fabricated or solid cut
- Recess on Aluminum & Brass approximately .020", Stainless Steel .015"

Visit our website for more samples: steelartco.com



WINDOW SLIDERS™

New from Steel Art, Window Sliders™ gives this solid, one piece construction maximum flexibility and numerous design options. Beneficial for areas with high turn over occupancy, as the removable window allows you to print and create your own content that can be done in-house on your own office printer. These custom window signs are available in all architectural materials and finishes. Unlimited sizes and window configurations. Made according to your specifications from solid metals for high-end applications.

SIZE RANGE
 • Height: 2" - 24" | Width: Max. 24" | Thickness: 0.25" - .5"

- SPECIFICS**
- **Lifetime Guarantee** on craftsmanship
 - Actual finish & color samples available
 - **Tough Template™ & Installer's Assistant™** available on all orders (see page 34)

Mounting methods are available in many variations. Please view on our website and/or discuss with your Project Manager.



Aluminum
Non-Directional



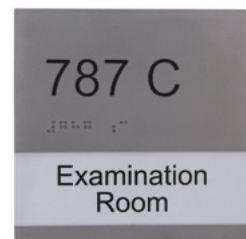
Stainless Steel
Satinbrite™



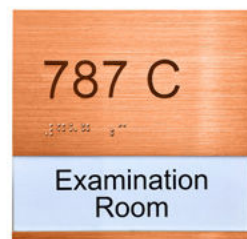
Brass Satin



Brass Satinbrite™
Oxidized



Stainless Steel
Crystallmatte™



Copper Satin

CARBON STEEL

Hot Roll Steel - A36

Hot rolled steel is the most popular carbon steel, commonly used in the construction industry. Hot rolled steel is known for its industrial look. Rust will develop over time and is greatly affected by the environment. A rust inhibitor can be applied when the letters are installed in the exterior, but will need to be reapplied periodically. Protective coatings are not recommended.

SIZE RANGE
 • Height: 4" - 48" | Depth: .5" - 6"

- SPECIFICS**
- **Lifetime Guarantee** on craftsmanship
 - Actual finish & color samples available
 - **Tough Template™ & Installer's Assistant™** available on all orders (see page 34)

Mounting methods are available in many variations. Please view on our website and/or discuss with your Project Manager.



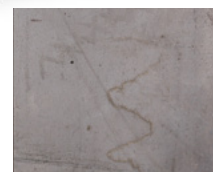
Hot Rolled
Fabricated



Cor-Ten
Solid Cut

Cor-Ten Steel - A606

The great thing about using Cor-Ten is that it is a weathering steel, meaning it is a material that is corrosion resistant and left uncoated, will develop an outer layer patina protecting it from almost any weather element. Cor-Ten will develop a stable rust-like appearance after several years of exposure to weather. Protective coatings are not recommended.



Clean



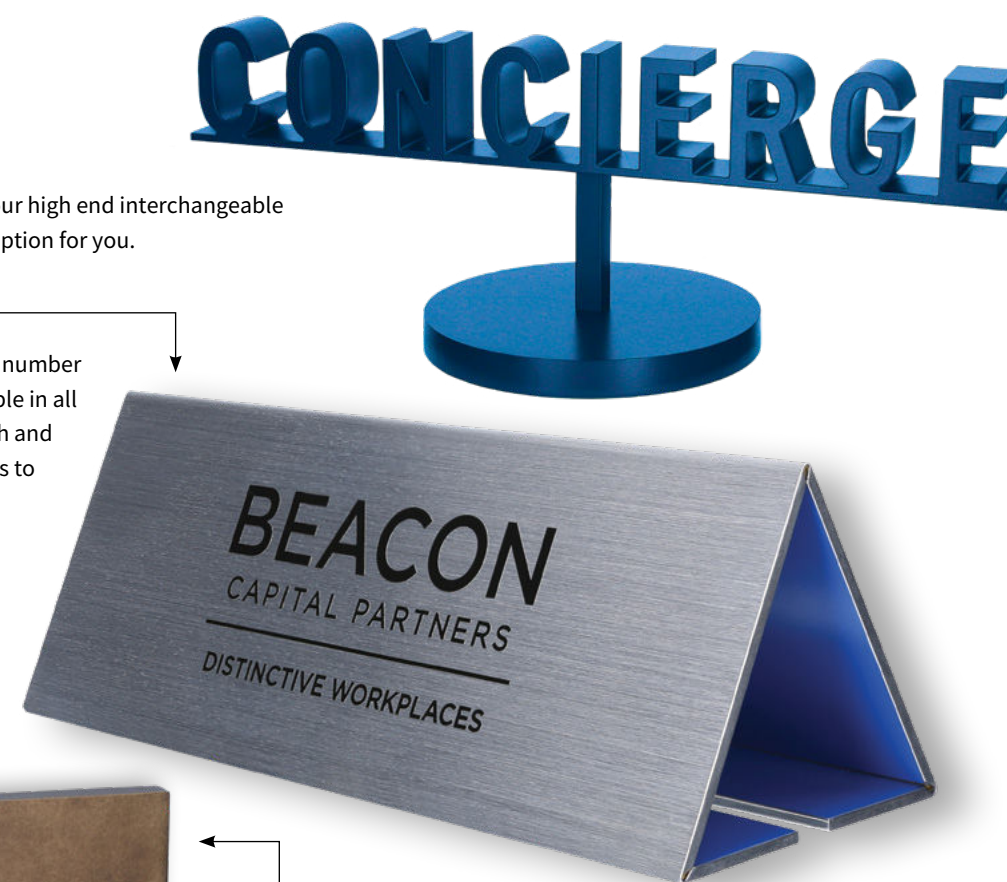
Weathered

FREESTANDING SOLUTIONS

Whether it's roll formed, triangulated or our high end interchangeable window slider desk signage, we have an option for you.

Triangulated Designs

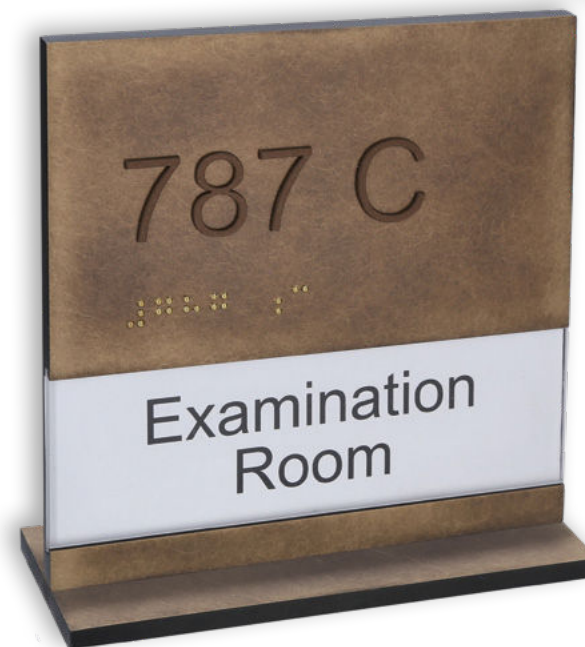
Triangulated metal signage can have a number of different finish options and is available in all of our architectural metals. We can etch and infill, direct print or apply vinyl graphics to any of these designs.



Window Slider

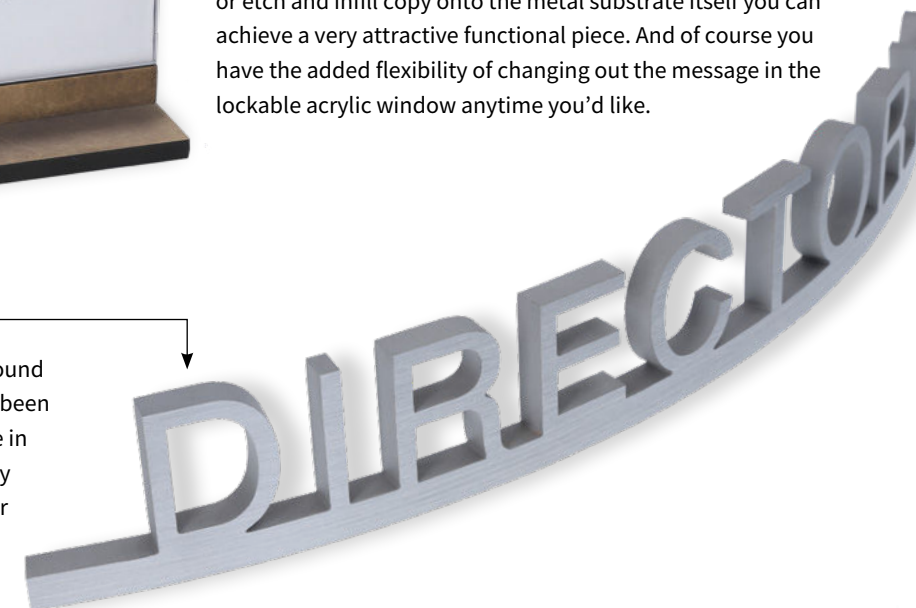
Introducing Steel Art interchangeable window slider signage now available in a freestanding design. If you're looking for a higher end option than just traditional extruded aluminum window sliders then take full advantage of our full array of architectural metals and finish options.

With the ability to direct print ADA compliant messages and or etch and infill copy onto the metal substrate itself you can achieve a very attractive functional piece. And of course you have the added flexibility of changing out the message in the lockable acrylic window anytime you'd like.



Roll Form Designs

Roll forming provides a structurally sound easy to mount signage piece that has been very popular for a long time. Available in any of the architectural metals. Simply provide us with the radius required for your counter top or wall section.



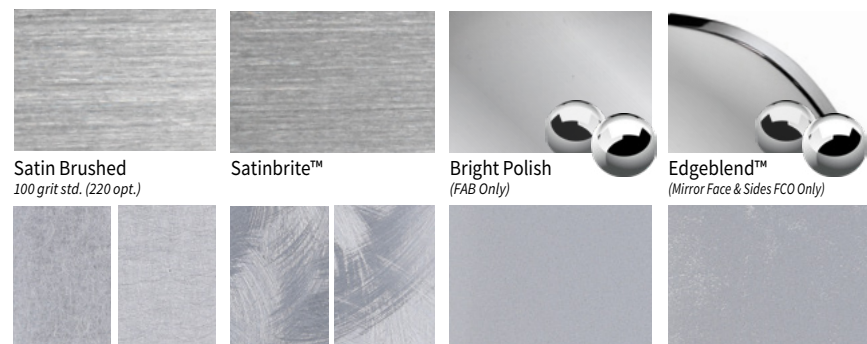
METAL FINISHES SOLID PLATE & FABRICATED

*Actual finish samples are available

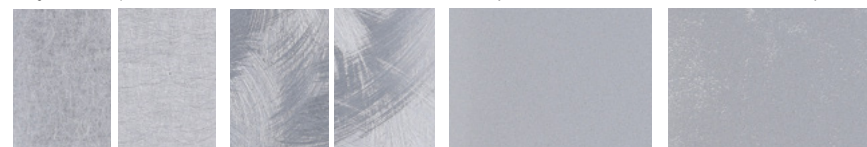


ALUMINUM

5052



Satin Brushed (100 grit std. (220 opt.))
Satinbrite™
Bright Polish (FAB Only)
Edgeblend™ (Mirror Face & Sides FCO Only)

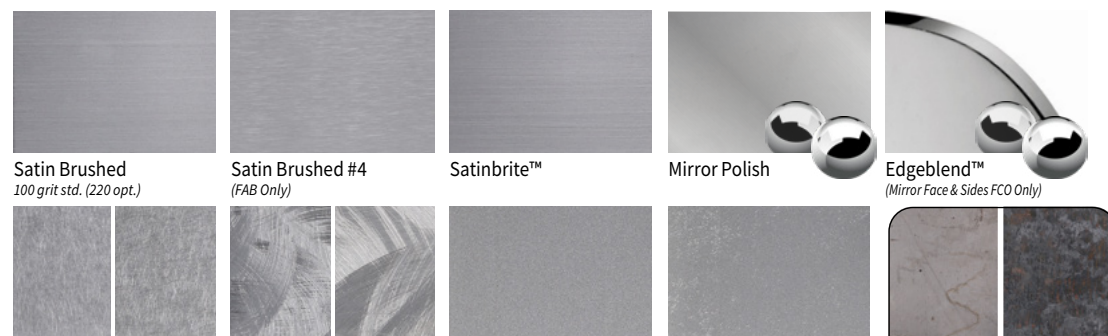


Non-Directional (Fine, Coarse)
Random Orbital (Fine, Coarse)
Crystalmatte™ (Glass Bead)
Prep for Paint (Abrasive Blasted)

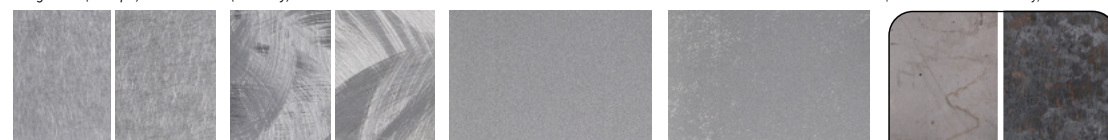


STAINLESS STEEL

304 & 316



Satin Brushed (100 grit std. (220 opt.))
Satin Brushed #4 (FAB Only)
Satinbrite™
Mirror Polish
Edgeblend™ (Mirror Face & Sides FCO Only)

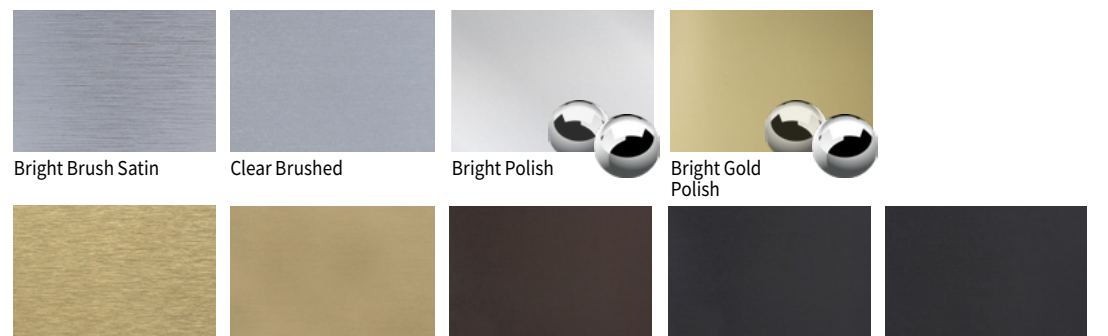


Non-Directional (Fine, Coarse)
Random Orbital (Fine, Coarse)
Crystalmatte™ (Glass Bead)
Prep for Paint (Abrasive Blasted)
Hot Rolled A36
Cor-Ten A606

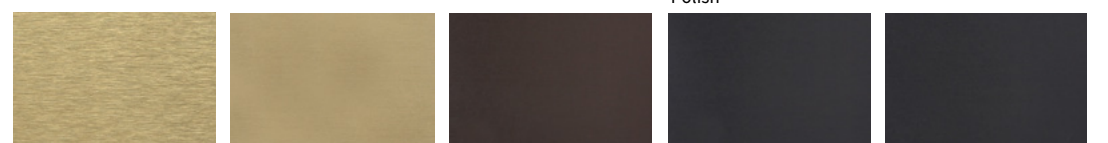


ANODIZED ALUMINUM

FABRICATED ONLY



Bright Brush Satin
Clear Brushed
Bright Polish
Bright Gold Polish

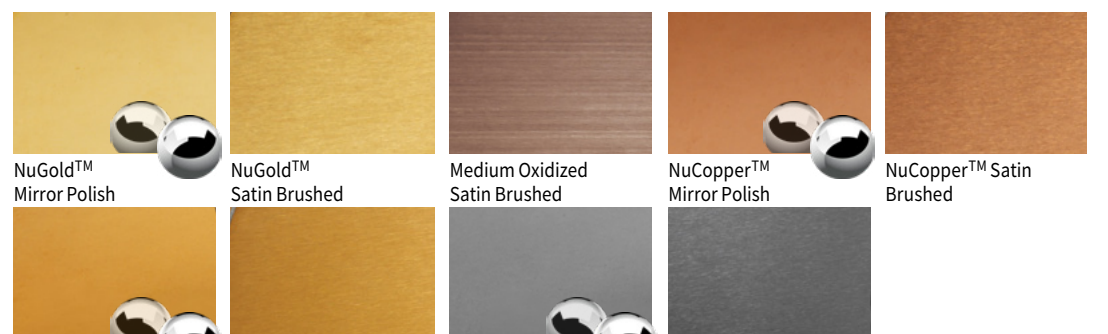


Bright Brushed Gold
Gold Satin
Medium Bronze Satin
Dark Bronze Satin
Black Satin

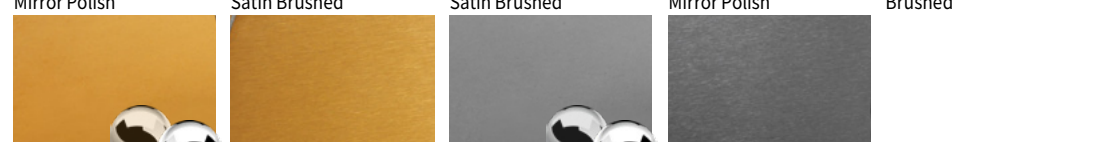


TITANIUM

304



NuGold™ Mirror Polish
NuGold™ Satin Brushed
Medium Oxidized Satin Brushed
NuCopper™ Mirror Polish
NuCopper™ Satin Brushed



NuBronze™ Mirror Polish
NuBronze™ Satin Brushed
Black Mirror Polish
Black Satin Brushed

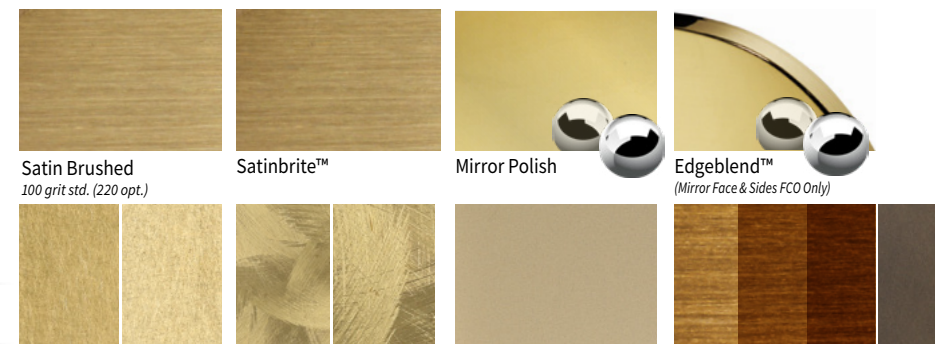
METAL FINISHES SOLID PLATE & FABRICATED

*Actual finish samples are available

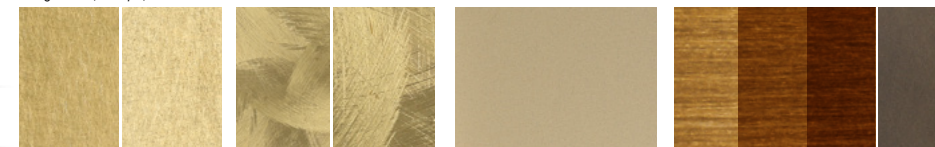


YELLOW BRASS

260



Satin Brushed (100 grit std. (220 opt.))
Satinbrite™
Mirror Polish
Edgeblend™ (Mirror Face & Sides FCO Only)

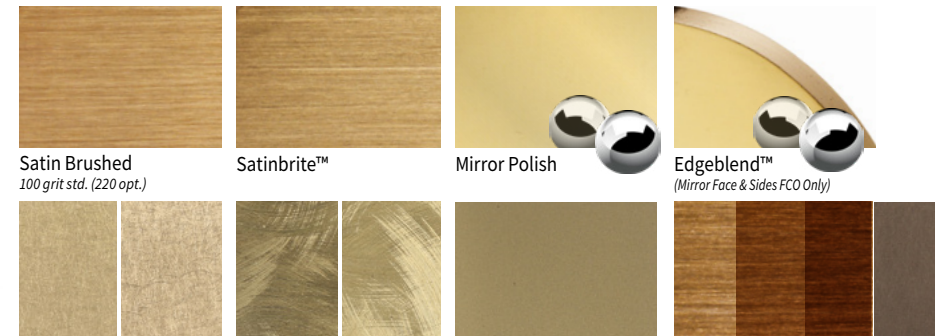


Non-Directional (Fine, Coarse)
Random Orbital (Fine, Coarse)
Crystalmatte™ (Glass Bead)
Satin Oxidize (Light, Medium, Dark)
Statuary Oxidize (Medium)

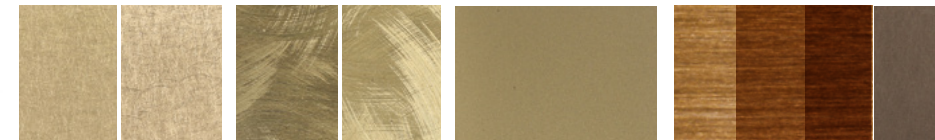


BRASS

280



Satin Brushed (100 grit std. (220 opt.))
Satinbrite™
Mirror Polish
Edgeblend™ (Mirror Face & Sides FCO Only)



Non-Directional (Fine, Coarse)
Random Orbital (Fine, Coarse)
Crystalmatte™ (Glass Bead)
Satin Oxidize (Light, Medium, Dark)
Statuary Oxidize (Medium)

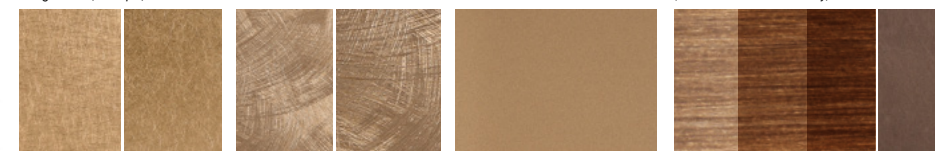


BRONZE

220



Satin Brushed (100 grit std. (220 opt.))
Satinbrite™
Mirror Polish
Edgeblend™ (Mirror Face & Sides FCO Only)

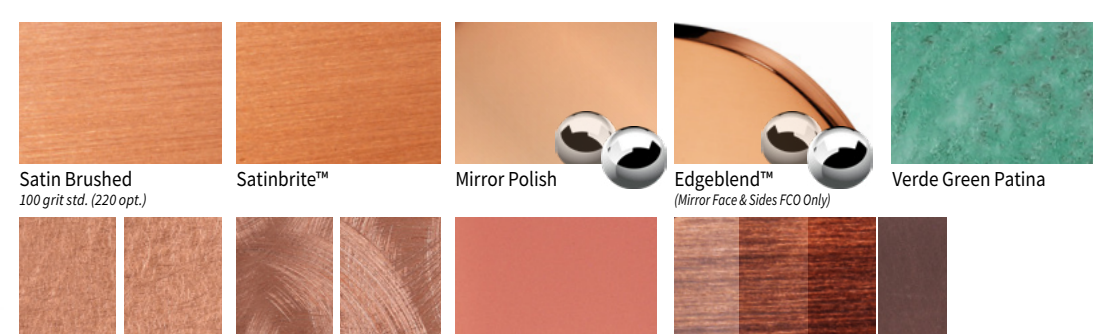


Non-Directional (Fine, Coarse)
Random Orbital (Fine, Coarse)
Crystalmatte™ (Glass Bead)
Satin Oxidize (Light, Medium, Dark)
Statuary Oxidize (Medium)

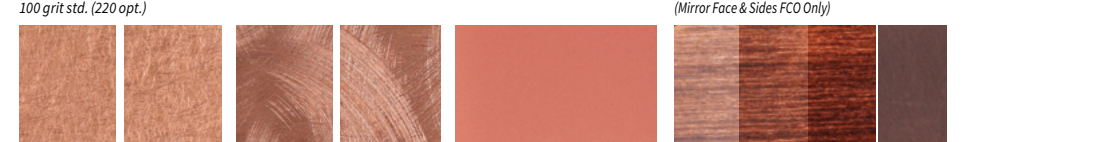


COPPER

110



Satin Brushed (100 grit std. (220 opt.))
Satinbrite™
Mirror Polish
Edgeblend™ (Mirror Face & Sides FCO Only)
Verde Green Patina



Non-Directional (Fine, Coarse)
Random Orbital (Fine, Coarse)
Crystalmatte™ (Glass Bead)
Satin Oxidize (Light, Medium, Dark)
Statuary Oxidize (Medium)

Color Systems

Our customers and their clientele benefit from the fast, problem-free color matching process and greatly reduced costs.



Steel Art currently has both sign grade color matching systems available for paint finishing: Matthews Paint Company and AkzoNobel. Both are known worldwide for their durability and tremendous color selections. So, whether it's an opaque color, metallic, or specific gloss level, **Steel Art** is eager to accept all of your color matching challenges.

You will receive a paint chip as part of the order approval process. Contact customer service for further questions on our paint approval process.

MATCH ANY COLOR

The computerized mixing stations can match virtually any color accurately. Our color matching capabilities include most other cross reference formulas, as well as the matching of acrylics, trimcap, vinyls, Pantone® Matching System, and more.



UL Listed Products

Steel Art is a UL Listed Manufacturing Facility. We are in compliance with all UL 48 standards.

UL Listing means that UL has tested representative samples of a product and determined that the product meets specific, defined requirements. These requirements are often based on UL's published and nationally recognized Standards for Safety.



Standards For All UL Listed Orders:

- UL Certification for Illuminated Letters
- UL Listed Power Supply Enclosure – Wet Rated
- UL Listed 60 watt Class 2 110-277v Power Supplies
- UL Listed 10' Cable Plenum Rated 18 gauge 2 conductor for each letter

UL Listed LEDs & Components:

- UL Listed 3 Conductor for grounding is available
- UL Listed Polycarbonate Backs
- UL Labels affixed to each sign section
- UL 48 Document Binder Supplied: Layout Drawing, Electrical Circuit Drawing, Specifications for all UL Components
- Quality Control Checked and Signed by Manufacturers UL Representative
- Monthly Factory Inspection by UL Field Representative
- Steel Art Company UL Listing E311574 for US and Canada

LED & Power Supply Offerings & Warranty

- All major brands of LEDs are in stock: HanleyLED, Bitro, Principle, Sloan, GE, AgiLight, etc.
- 10-Year LED Warranty
- Labor Warranty up to \$500



Know The Difference: Acrylic #2447 & #7328

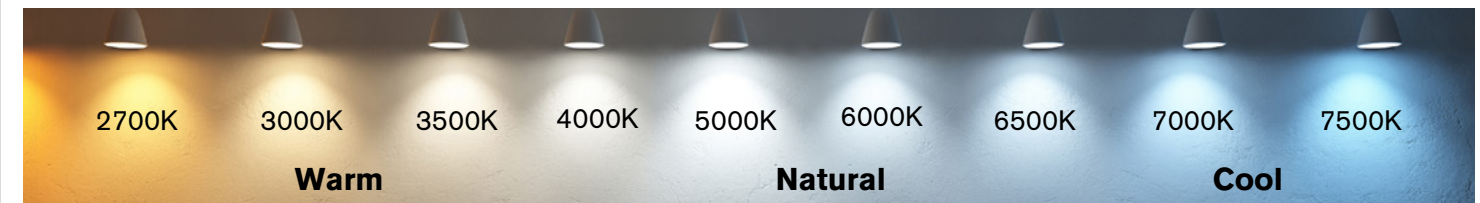
The translucency of an acrylic can affect how true and clean the color is when not illuminated.

There is a distinct difference between our standard acrylic #2447 and the popular #7328 - both when illuminated and seen when non-illuminated. Acrylic #2447 appears grayish-white when non-illuminated, but super bright white when illuminated. Whereas, #7328 will be brighter white during the day, but will be less brighter than #2447 when illuminated.

So, what all this means is, if it is more important that the letters are true white when non-illuminated, then 7328 is most likely going to be your first choice. However, if the illuminated letters are desired to be brightly lit than 2447 your best choice.



LED Facts



What is Kelvin (K) Value?

Kelvin is the measure of light ranging from warm to cool. Typical range for LEDs is 2700K to 7500K, being the most commonly supplied. 5000K is Natural White and all K values below that are considered Warm White. Not all module sizes are available in choices of K values, check with your Project Manager.



What is a Lumen?

A lumen is a measurement of the intensity of the LED light. In general, small modules have the lowest Lumens approx. 30 and larger modules have more intense light approx. 150 or higher Lumens. Too much light is not necessarily a good thing as it could lead to hot spots in some applications.

What function does the lens have in distributing light?

Years ago, 120 degree angle of light distribution was primarily all that was available. Today light spread of up to 50 to 180 degrees is a standard offering. The wider the spread of light, the fewer modules are required and the less likely that hot spots will occur.

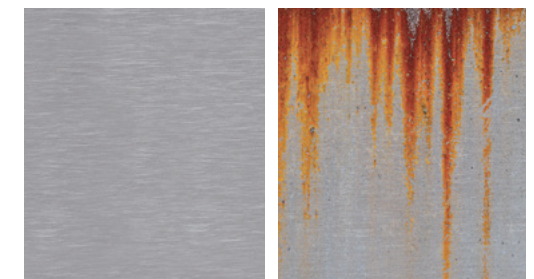
View and download our Kelvin Guide here:



Passivation

Passivation is the process of treating or coating a metal in order to reduce the chemical reactivity of its surface. In stainless steel, passivation means removing the free iron from the surface of the metal using an acid solution to prevent rust. Passivation inhibits "tea-staining" in stainless steel. All exterior, solid plate and fabricated letters are passivated at **no additional cost.**

Stainless steel is comprised of a mixture of metals, primarily iron, chromium, nickel and in some cases molybdenum and manganese along with other materials in small quantities. It is this unique blend that allows the special property of corrosion resistance by forming an outer protective passive oxide layer. Stainless steel surfaces can be made highly resistant to corrosion if they are properly cleaned and passivated prior to use.

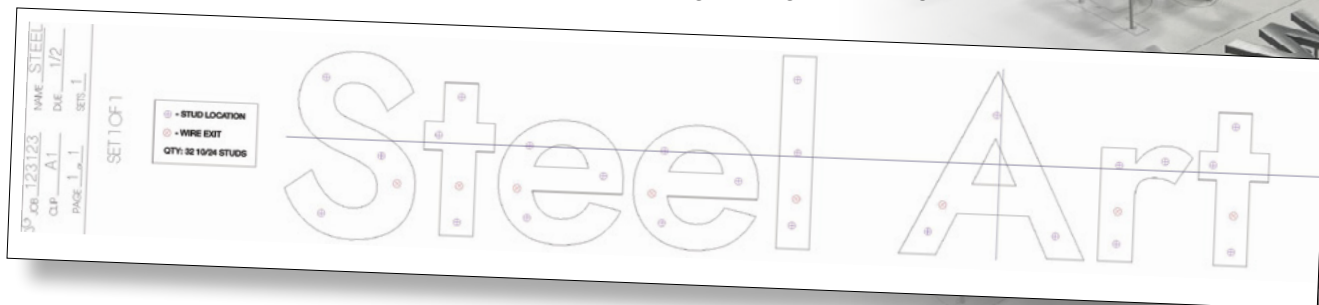


Tough Template™

Our installation template is created with a wrinkle and tear-proof material which can be taped, tacked, drilled and transported easily. Also wind, water and tear proof means you can still install on those bad weather days.

Tough Template™ Displays:

- Stud Locations
- Wire Exits
- Center Lines
- Hardware Quantity
- Stud & Spacer Size
- Full Length & Height of Reading



Installer's Assistant™

Steel Art announces a quick and accurate tool for installing tape mounted letters. Available immediately; a stencil cut, self-supportive inlay template to make mounting of adhesive or tape mounted letters simple, fast and clean.

Whether the specifications call out for 1 or several hundred letters, all the way up to a pattern size of 48"x120" this new Installer's Assistant™ will be a great help for your installation budget.

NEW

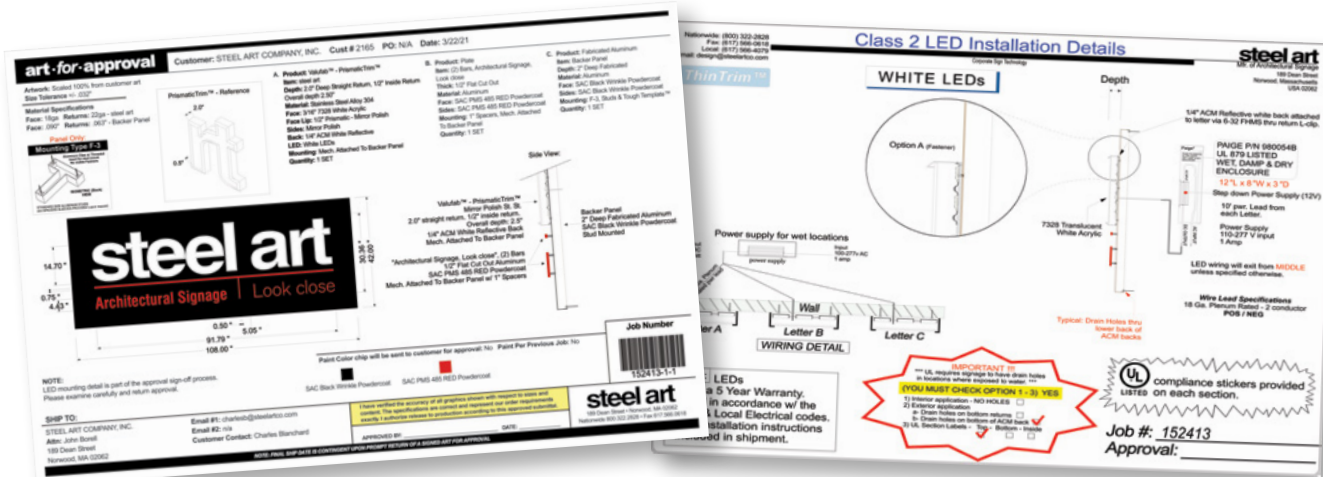


Installer's Assistant™ fits in your shipping box folded flat. So, when you spend expensive time aligning it on the wall, it is undistorted and hugs the surface.

Ask your Project Manager for more details.

Art for Approval (AFA)

Steel Art's approval process starts with a comprehensive breakdown of all specifications for scope of your project. It is inclusive of multiple textual explanations, as well as side and overview drawings designed to give you maximum understanding of your jobs details. It is very important that these documents are scrutinized as once they are approved, they will be manufactured exactly as shown.



Installation Hardware

Aluminum & Stainless Steel Threaded Studs

Standard aluminum fully threaded studs included in price. Non-standard available at an extra cost.

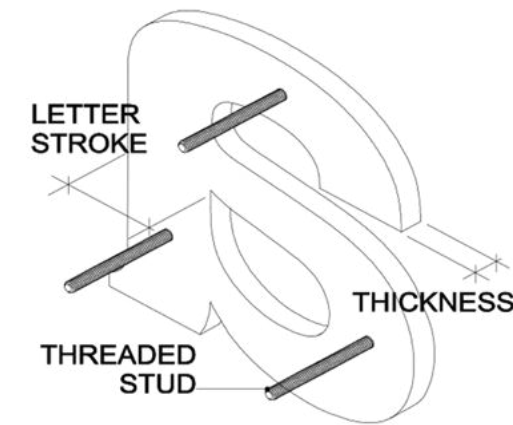
Stainless Steel studs available at an extra cost.

Larger diameter sizes and lengths available.

Ask your project manager for more information.

*3/8" & 1/2" threaded rod available. Ask your project manager for pricing.

SIZE	Threads	Std. Lgths	Diam.
#0-80	80 threads	1"	.06"
#2-56	56 threads	1", 1.5"	.086"
#4-40	40 threads	1", 1.5", 2"	.112"
#6-32	32 threads	1", 1.5", 2", 3", 4"	.138"
#8-32	32 threads	1", 1.5", 2", 3", 4"	.164"
#10-24	24 threads	1", 1.5", 2", 2.5", 4"	.19"
#10-32	32 threads	1", 1.5", 2", 2.5", 4"	.19"
#1/4-20	20 threads	3", 4", 6"	.25"



Standard aluminum spacer sleeves for stud sizes included in price.

Lengths available in: 1/8", 1/4", 3/8", 1/2", 3/4", 1", 1.5", 2"



Larger diameter, painted and satin finish spacers available. Ask your project manager for pricing.

Threaded Weld Studs

Threaded weld studs on aluminum, stainless steel or red metals are available.

#6/32	Shown in actual size
#10/24	
#1/4-20	

Standard lengths are 1", 1.5", 3"

Specialty Hardware

Stainless steel hex nuts, machine screws and washers available at extra cost.



Pressure Sensitive Tape Mount

- 3M Products and other premium brands
 - Available in: Clear, Black, White, High Bond, Very High Bond
 - Full and In-Lined backing available with holes for adhesive
 - **Now Available...** Full Back and Tape Strips
- Ask your project manager for more information.



Tape Mount Options

LOOK CLOSE

Online **Digital Catalogs**

Please view our digital catalogs for additional information, products and capabilities beyond what is shown in the master catalog.



Scan these QR codes to view our catalogs digitally and download them as PDFs.

For information on unbranded marketing materials contact: sales@steelartco.com



Architectural Signage

Exclusively for the Sign Trade... Since 1952

189 Dean Street
Norwood, MA 02062



800.322.2828 | 617.566.4079

steelartco.com